




Capital Homes
residential apartments

Attavar, Mangalore

Capital homes is a pleasant integration of style space and natural ambiance which is built with standard construction settings with green aspects of living and ambiance considered in every angle.

Capital homes is located in Attavar, Mangalore which keeps a walk-able connection to KMC Hospital, Manipal School, Big Bazaar, Railway Station and all other major destinations which meets the day to day needs.

HIGHLIGHTS

Lift with 8 passenger capacity
Reticulated Gas Connection
Generator for common and apartment lighting with soundproof enclosure
Recreation hall for in the terrace floor.
Cable T.V. provision
Surveillance monitoring and recording.
Security rooms & common toilets in ground floor.
Concrete interlock paving for car parking and yard.
Marble / Granite flooring for the common areas and staircase.
Attractive Melamine / PU coated decorative main entrance door.
Superior 24" x 24" vitrified floor tiles for internal spaces of the apartment.
Designed glazed tiles for toilets and kitchen (24" above platform).
Granite platform with bull nosing and with Granite* / Stainless steel* sink for kitchen.
C.P. Plumbing fittings for toilets and kitchen.
White sanitary ware (Hindware* / Parryware*) in all the toilets.
Putty finished acrylic distemper painting for ceiling and walls.
Modular electrical switches.
Superior designer locks for all inside doors.
Adequate fire fighting systems.

SPECIFICATION

External painting of the building with exterior emulsion paints.
Compound wall & gate.
RCC door frames with good quality decorative flush door shutters for rooms and Fibrotech shutters for toilets.
Colour coated aluminium window frames and steel grills.
All types of fixtures for door and windows.
Electrical fittings for recreation hall, common toilets, car parking and yard.
3KW power provided for each apartment with single phase meter.
Power failure sensing siren.
Overhead water tank and underground sump tank with required pumps.
Automatic water level controller for overhead tank.

DRAWING / DINING

T.V. point and telephone / Intercom connection.
Wash basin for dining.
Call bell in the dining.

BEDROOMS

AC provision in all bed room.
2 way light control and night lamp.

BATHROOMS

Pressure checked plumbing and drainage lines to ensure total leak proof toilets.
Flush valves / Cocks* for commodes.
Hot and cold mixer unit for all bath rooms.
EWC for all bathrooms
Anti skid ceramic tiles for bathroom floors.
Provision for exhaust fan.

KITCHENS AND WORK AREA

Adequate power points.
Provision for fixing and connecting water purifiers near the kitchen sink.
Plumbing and drainage connection with power point for washing machine.
Provision for exhaust fan.



1BHK sqft 625
 2BHK sqft 750, 800, 1000
 3BHK sqft 1125, 1400

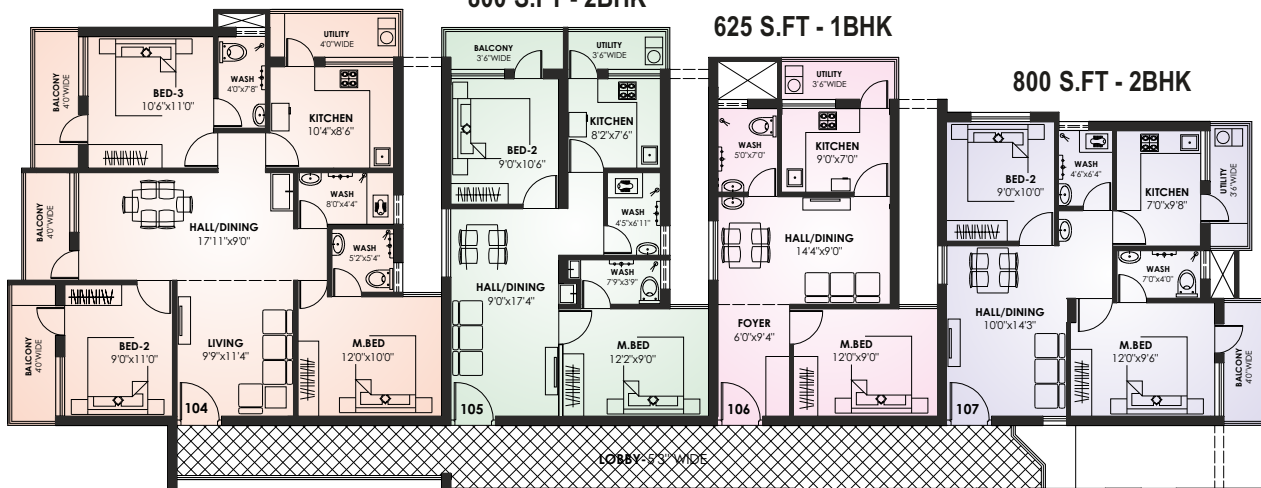
ROAD

1,400 S.F.T - 3BHK

800 S.F.T - 2BHK

625 S.F.T - 1BHK

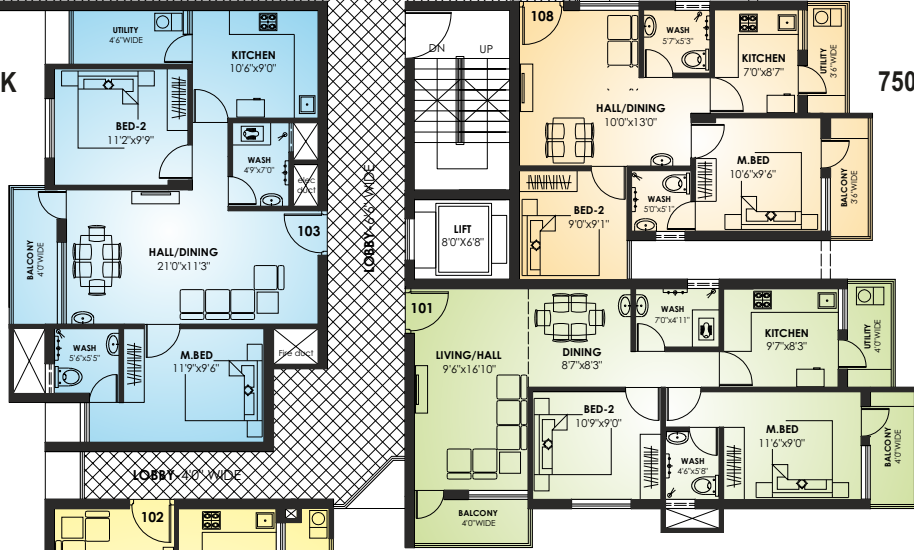
800 S.F.T - 2BHK



ROAD

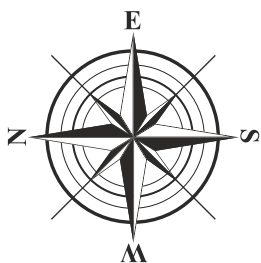
1,000 S.F.T - 2BHK

750 S.F.T - 2BHK



ROAD

1,125.00 S.F.T - 3BHK

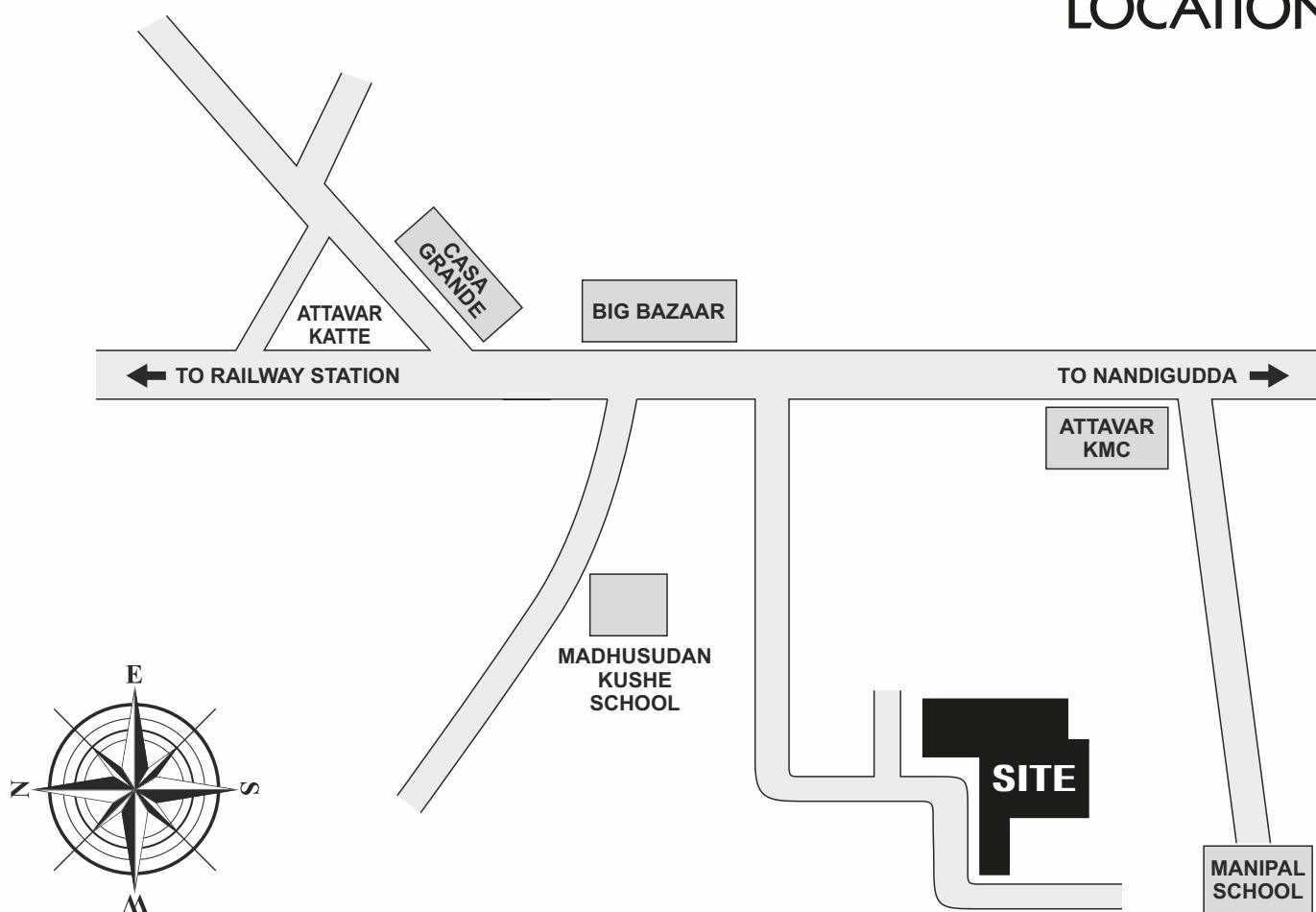


TYPICAL FLOOR PLAN

ROAD



LOCATION MAP



Promoters:



B-16, D.No. 17-17-1315/16,
Basement Floor, Casa Grande Mall Complex, Attavara, Mangalore
Email: info@capitalinfra.net | www.capitalinfra.net



BOOKING CONTACT : +91 78999 45999 / 76767 16666